

Milford Wind Corridor

April 19, 2011

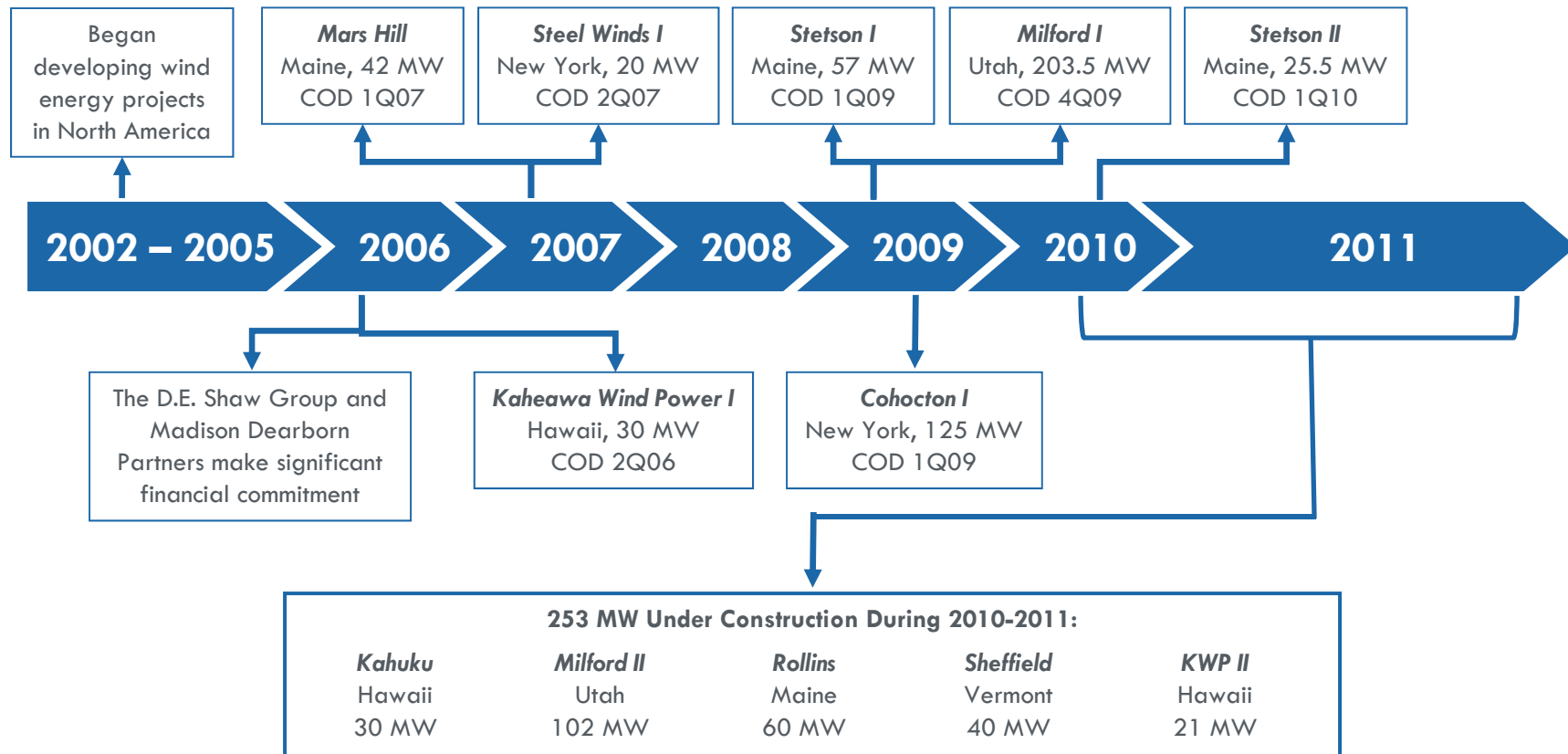


Presented by:

Bryan Harris – Development Manager
435-421-1270 | bharris@firstwind.com



First Wind History



First Wind Fleet



KWP I

Maui, HI
 30 MW; 20 GE 1.5
 COD 06/2006

Phase II Under Construction



Mars Hill

Mars Hill, ME
 42 MW; 28 GE 1.5
 COD 03/2007



Steel Winds

Lackawanna, NY
 20 MW; 8 P&W 2.5
 COD 06/2007



Cohocton

Steuben County, NY
 125 MW; 50 P&W 2.5
 COD 01/2009



Stetson I + II

Washington County, ME
 83 MW; 55 GE 1.5
 COD 01/2009 & 03/2010



Milford I

Millard & Beaver Counties, UT
 204 MW; 58 P&W 2.5 + 39 GE 1.5
 COD 11/2009

Phase II Under Construction

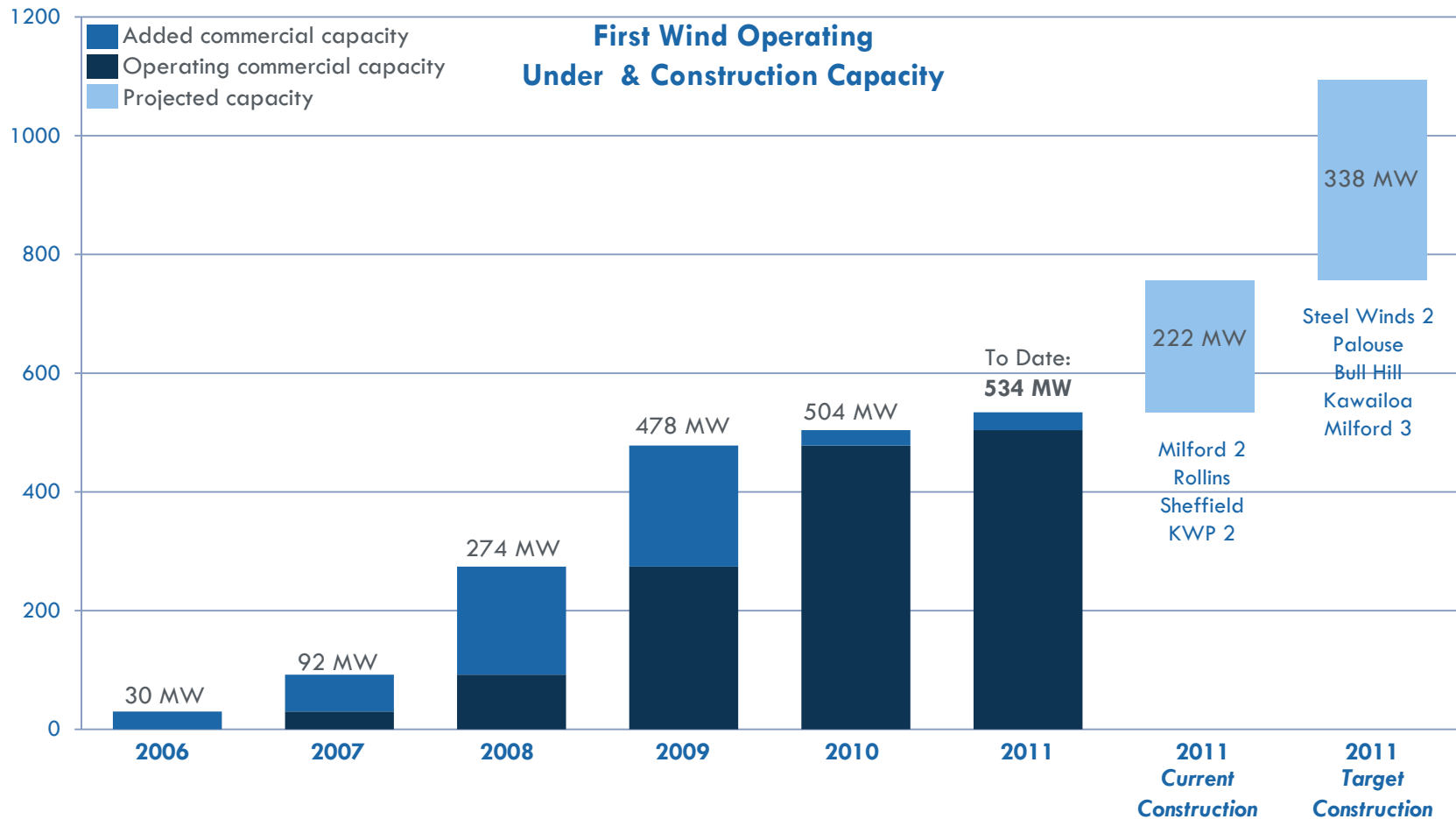


Kahuku

Oahu, HI
 30 MW; 12 P&W 2.5
 COD 3/2011

First Wind Fleet

Consistently growing our fleet of operating and under-construction wind projects through various economic cycles



Integrated Capabilities



Development



*Wind resource analysis
Origination and Finance
Stakeholder outreach
Site assessments
Permitting*

Engineering & Construction



*Site design and planning
Project management
Construction
Transmission*

Operations



*Site Management
Maintenance
Compliance
DACC*

A Company of Firsts

Siting

- **Steel Winds** (20 MW) – Development on EPA Brownfield Site

Environmental

- **KWP** (30 MW) – Development with Habitat Conservation Plan

Financing

- **Stetson Phase II** (26 MW) – Unique PPA off-take with Harvard University

Transmission Engineering

- **Milford** (204+ MW) – Developed 88-mile Generator Lead

Technology

- **Kahuku** (30 MW) – Integrated 15 MW Battery Energy Storage System





Milford Wind Corridor

“Why Not Milford?”



Milford Wind Corridor Project, Phase I

- Beaver and Millard Counties
- COD 11/2009
- 97 GE and Clipper wind turbines with nameplate capacity of 203.5 MW
- 88-mile generator lead line with max capacity of 1,000 MW
- Power for ~44,000 homes (SCPPA)
- First wind energy project permitted on BLM land
- Resulted in \$51mm economic benefit for Utah; benefits will continue to accrue during operations and throughout additional project phases



r Lead Line

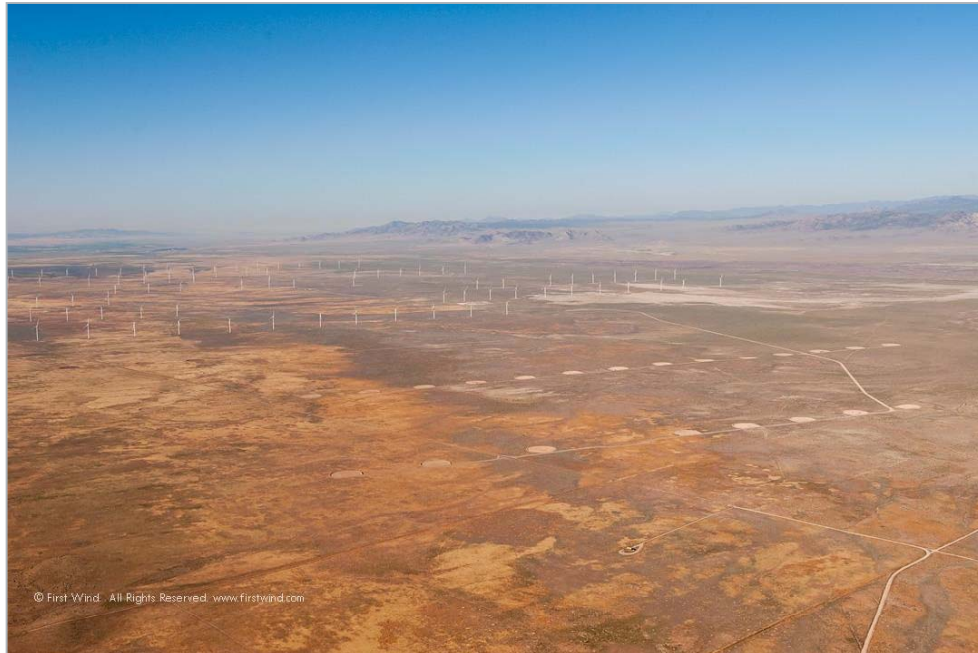


Secretary Salazar Visit



Milford Wind Corridor Project, Phase II

- Beaver and Millard Counties
- Directly North of Phase I
- Expected COD 05/2011
- 68 GE wind turbines with nameplate capacity of 102 MW
- Power for ~22,000 homes (SCPPA)

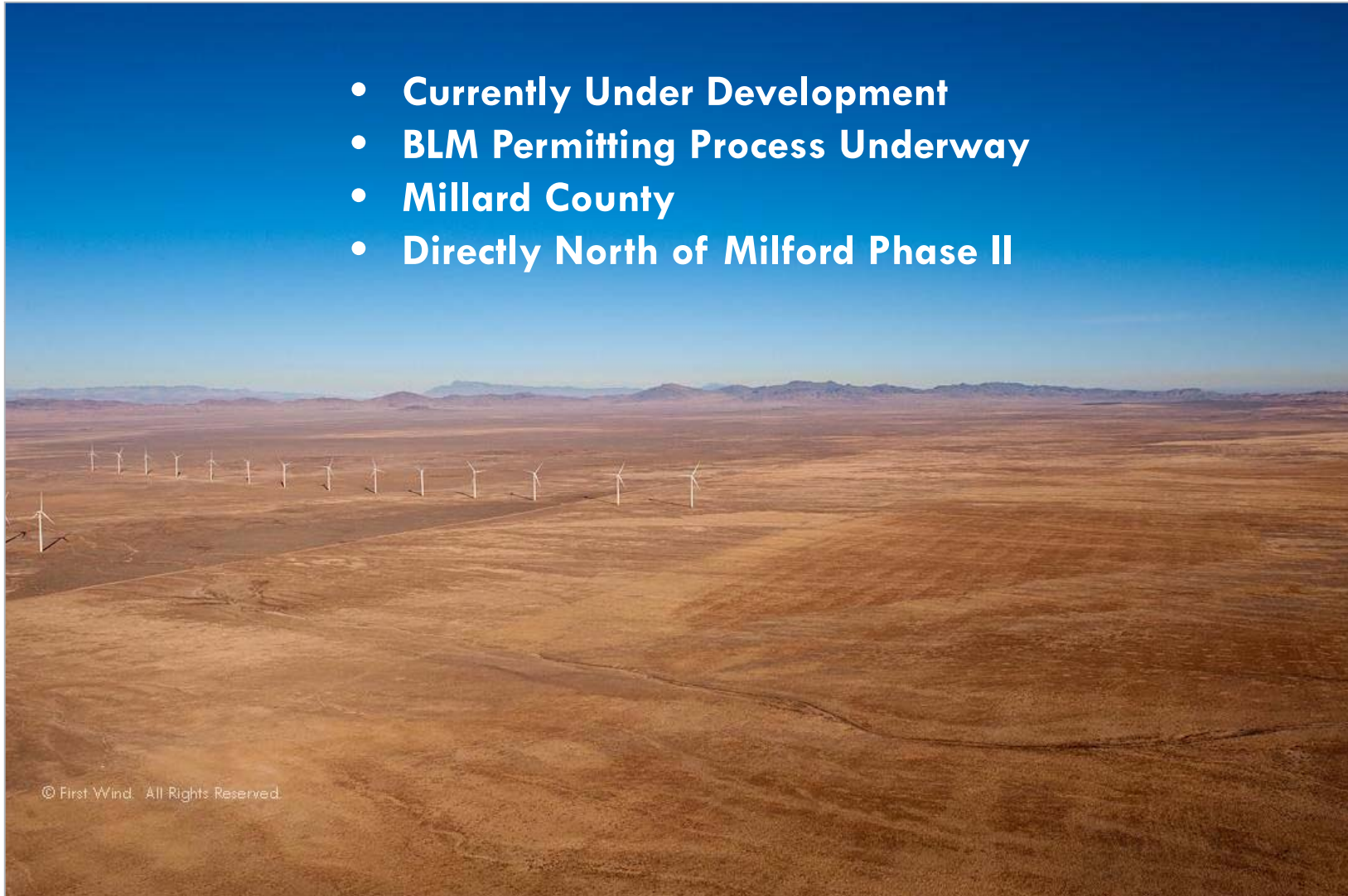


Milford 2 Turbine Component Deliveries



Milford Wind Corridor Phase III, Project

- **Currently Under Development**
- **BLM Permitting Process Underway**
- **Millard County**
- **Directly North of Milford Phase II**





st Wind. All Rights Reserved.



Community Involvement and Partnerships

Commitment to Community



Milford High Teacher - Andy Swapp



© First Wind and Douglas Barnes Photography. All Rights Reserved.

The Wind Kids

Community Driven from the Beginning

- Classroom initiated wind studies and analysis
- Created significant community interest prior to development
- Milford project served as pilot program for First Wind Scholarship program
- Creates continuing opportunities to support wind, science and education



First Wind Scholarship Program

“We are excited that First Wind has selected our community as the first for its new scholarship program, and we know it will greatly benefit one of our high school students, many of which have already been inspired by this project.”

-John Nielsen, Principal, MHS

- **One-time \$3,000 Scholarship for college-bound high school students**
- **Students interested in environmental sciences, technology, or engineering**
- **Expanded to all project communities in 2010 (10 in total)**

Corporate Citizenship

- First Wind remains an active corporate citizen in Beaver and Millard counties; supporting a range of community events and programs:
 - Civic Organizations
 - Facility improvements
 - 4th of July celebration
 - County Fairs



Key Partnerships



**MILFORD
HIGH SCHOOL**





firstwind®

CLEAN ENERGY. MADE HERE.®

