

raser<sup>®</sup>

TECHNOLOGIES

# RENEWABLE POWER GENERATION

GEO THERMAL



SOLAR



WIND



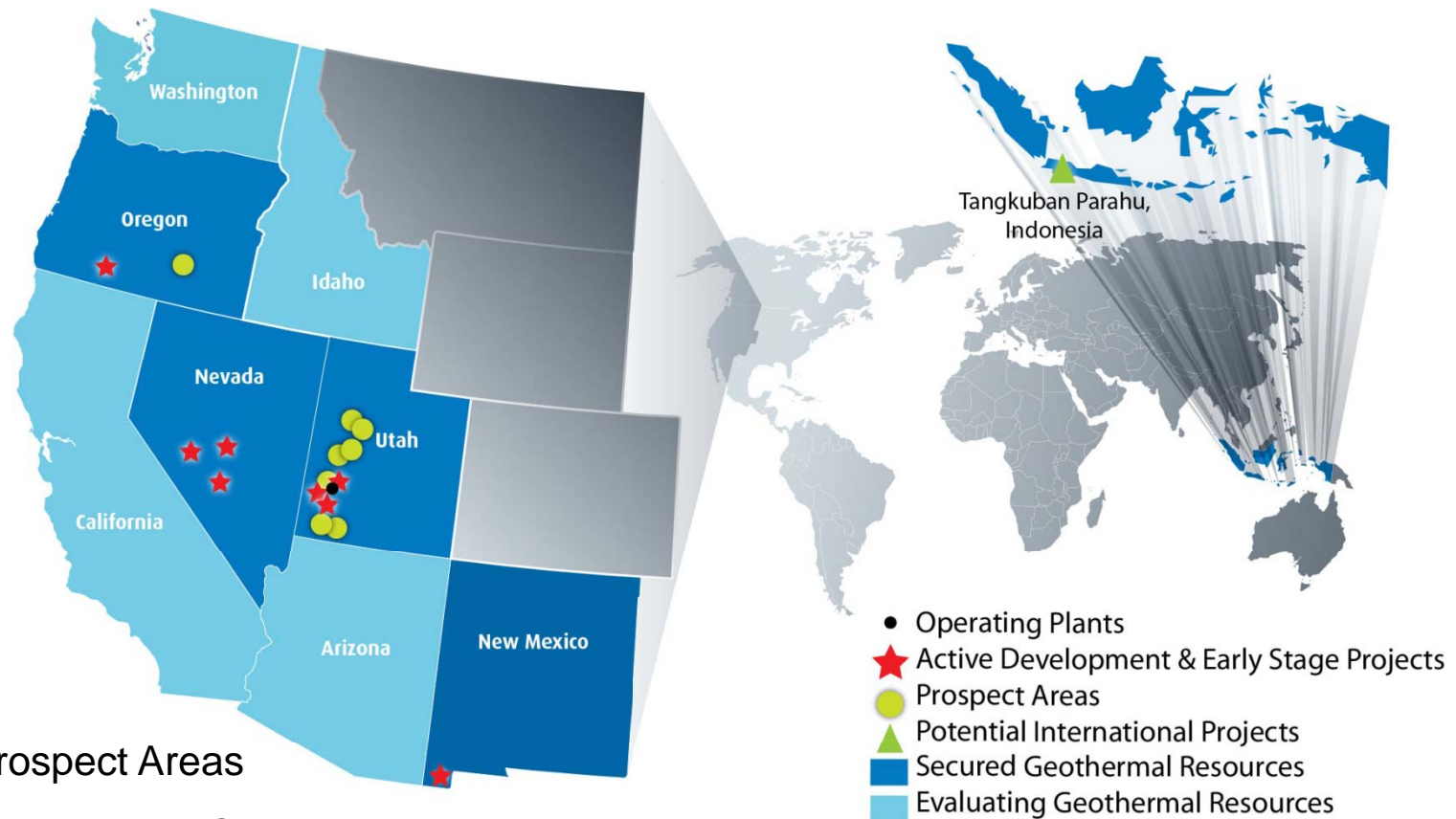
# Forward Looking Statement



Our presentation will contain forward-looking statements within the meaning of federal securities laws. These forward-looking statements will include statements and assumptions regarding (i) expectations or estimates of future financial and operating results or events, (ii) industry and market trends, (iii) access to adequate financing and (iv) other market opportunities for Raser. There are a number of risks and uncertainties that could cause our actual results to differ materially from those described in the forward-looking statements. For additional information concerning risks that could cause such differences, please refer to our annual and quarterly reports and our other filings with the Securities and Exchange Commission. The information in this presentation discusses the state of Raser's business as of the date of presentation. Raser does not assume any obligation to update or correct any information covered herein.

# Raser's Projects & Prospect Areas

Raser has secured one of the largest portfolios of resource interests in the US and has additional interests in Indonesia



✓ 8 Projects & 8 Prospect Areas

✓ Approx. 275,000 acres in U.S., 100,000 in Indonesia

✓ Independent studies at Thermo & Lightning Dock indicate approximately 255 MW

# Thermo No. 1 Power Plant



# Thermo Fact Sheet



- 10 MW Plant geothermal plant
- Located in Beaver County.
- April 2009 Commercial Operations
- Located on State Trust Land.
- PPA with City of Anaheim.
- Assessing repowering options

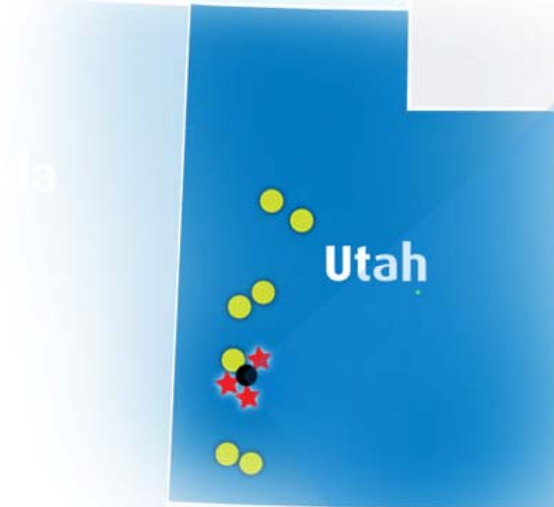
# Lightning Dock, New Mexico Geothermal Project

- Target 15.0 MW geothermal plant
- Completed first production well in early 2011
- Funding Partner - FE Clean Energy, \$15 million well field financing
- Signed term sheet with Ormat Technologies to provide EPC financing
- 2012/2013 Commercial Operation Date



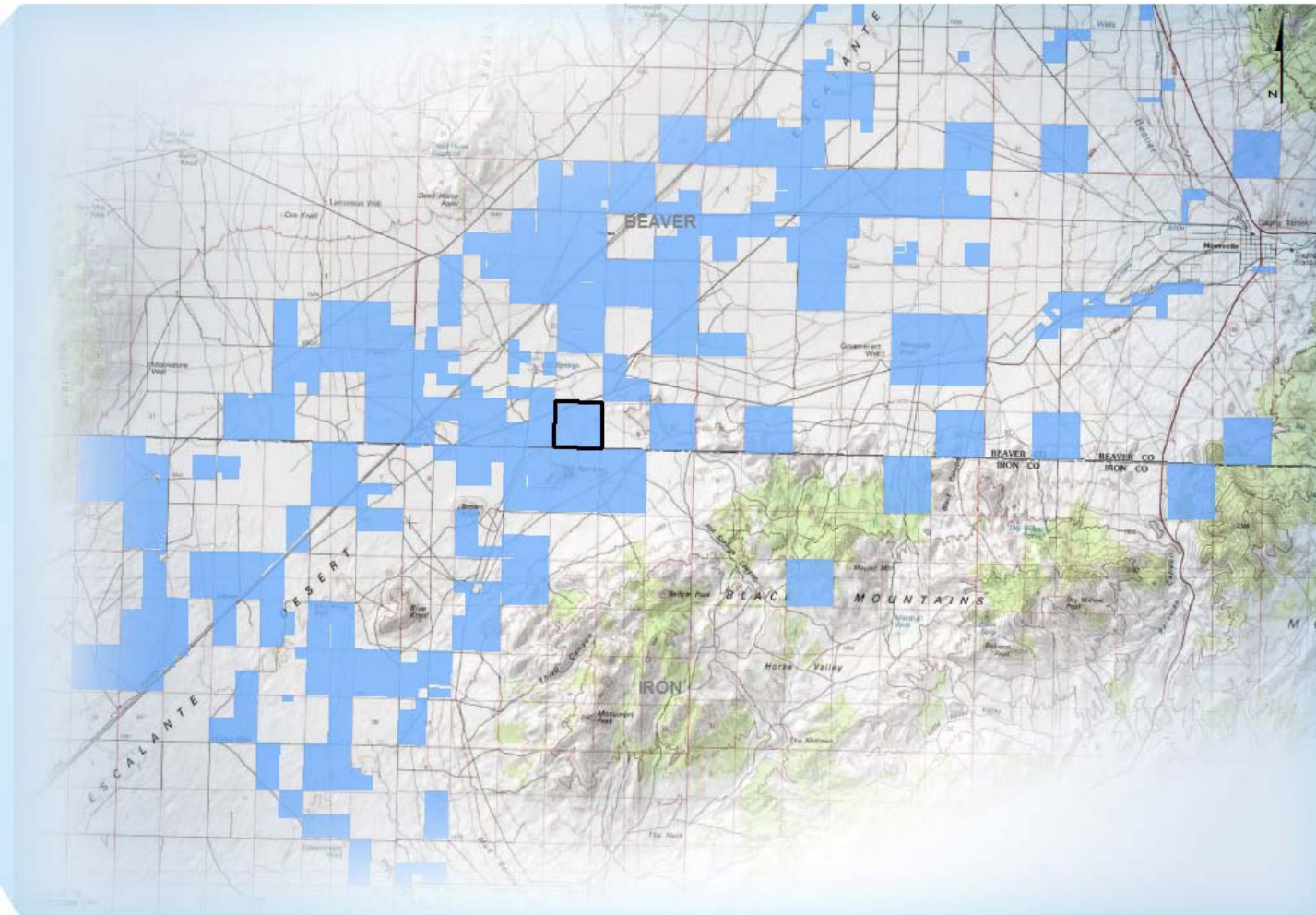
*Lightning Dock, New Mexico*

# Thermo 2, 3 & 4- Utah



## Location

- Southern Utah
- 6,000 Acres (Private)



□ Thermo 1  
■ Raser Lease

Land Position at Thermo, UT

# Thermo 2, 3 & 4- Utah



## History

- Presence of hot springs with temperatures of approximately 200°F attracted the attention of geothermal developers during the 1970s & 1980s
- One deep well drilled in 1977 to a depth of 7,289 feet (approximately 1 mile) encountering a temperature of 341°F
- Raser initiated preliminary studies in 2007 and began a drilling program later that year
- Thermo No. 1 wells provide significant insight into the geology of this area
- Independent assessment from the Energy & Geoscience Institute and GeothermEx
- Over 30 temperature gradient wells and multiple geophysical studies

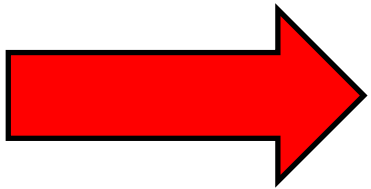
# Thermo 2, 3 & 4- Utah



## Status

- Projects
- Drilling and injection well permits completed
- Water (cooling) permits underway
- Right of way, permitting and interconnection underway for expansion of existing transmission lines to accommodate future projects

# Thermo 2, 3 & 4- Utah



## Moving Forward

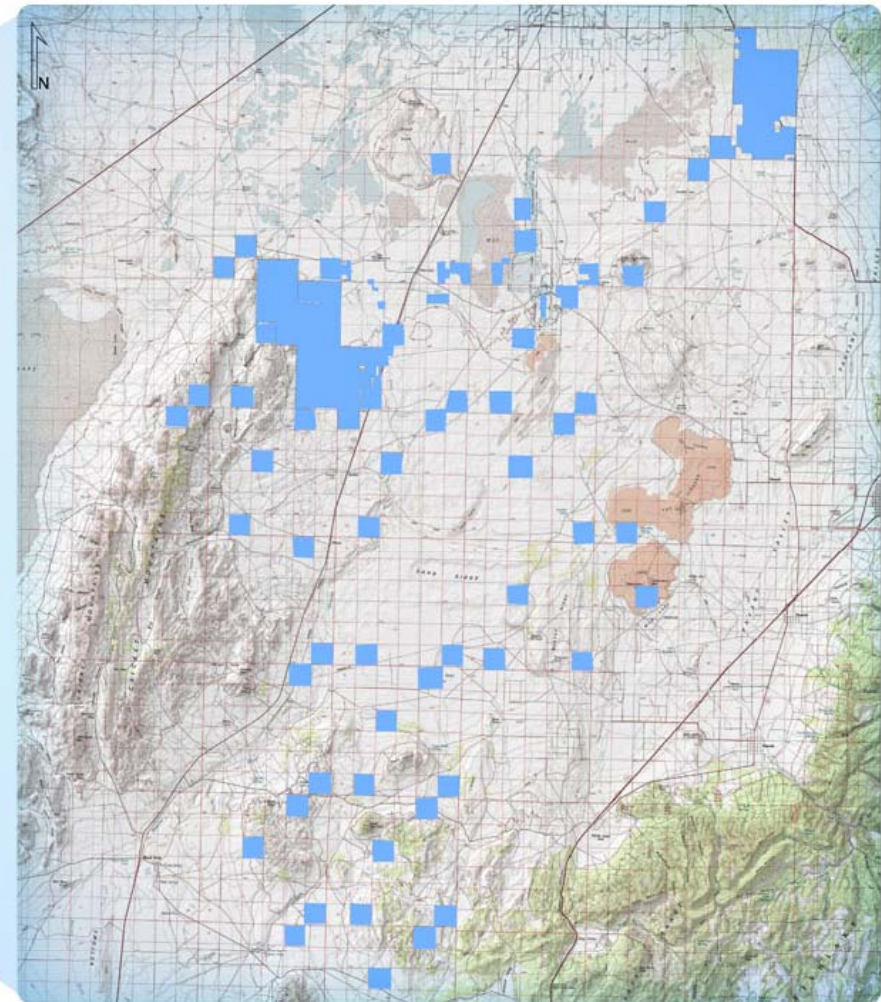
- Estimated Output- 26 Megawatts each project
- Additional gravity & magnetotelluric surveys planned
- Results of these surveys will provide new insights into geologic structure and reservoir characteristics which will help facilitate siting locations for new wells

# Cricket- Utah



## Location

- Sevier-Black Rock Desert, approximately 30 miles south of Delta, Utah
- 54,000 Acres (State & BLM)
- Easily accessible



■ SITLA Leases  
■ BLM Cricket

Raser Land Position at Cricket

# Solar and Wind

- Assessing potential at Raser Geothermal Sites
- Located in good solar and wind resource locations.
- Combined renewable resources attractive to utilities.



- Transmission infrastructure in place
- 5.0 MW Project at Thermo

raser<sup>®</sup>

TECHNOLOGIES

# RENEWABLE POWER GENERATION

GEO THERMAL



SOLAR



WIND

